

Digital Video Recorder Quick Operation Guide

This manual may contain technical inaccuracies, operations inaccuracies and printing errors. Based on changes in product functions, we will update contents of this manual and the corresponding hardware and software products.

This manual provides reference to users. Please prevail in kind. Parts, components and accessories mentioned in this manual don't represent configuration of the product you purchased.

Packing List

No	Name	Quantity
1	Host of digital video recorder	1
2	Power adapter	1
3	mouse	1
4	Quick operation guide	1
5	certificate	1
6	Network cable	1

Precautions

The following is about usage of devices, the prevention of danger as well as preventing property from loss. Please be sure to comply.

- ▶ Please place DVRs within the permissible range of temperature and humidity.
- ▶ Place the product horizontally and pay attention to preventing it from falling.
- ▶ Install it in a well-ventilated place and don't block the vent.
- ▶ Don't place containers filled with liquid on the device.

Access Guide



SgsEye WEB
Please access
www.sgseye.com for get
more helps and detailed
product manuals.



Android SgsEye App



iPhone SgsEye App

Mobile client(SgsEye) supports Android 2.1 and
higher versions,IOS 4.3 and higher versions

HDD Guide

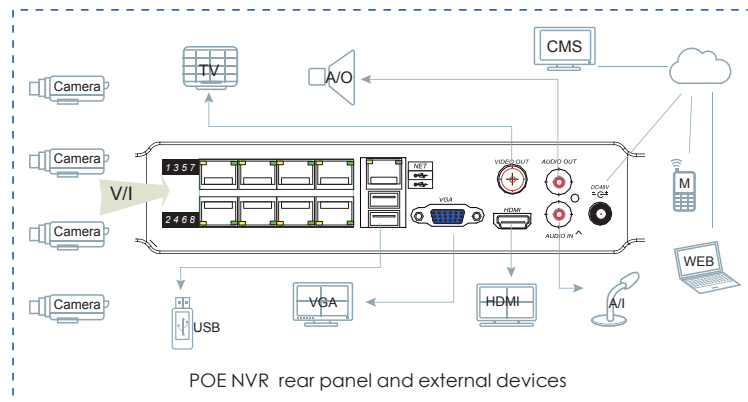
When the device records for 24 hours,please refer to the following form about available time of different HDDs.

Number of cameras	HDD Capacity(TB)	Stream(Mbps)	Available time of HDD(day)
4	2	4	12
8	2	4	6
16	4	4	6

The form is for reference.Available time of HDD is based on access channels and actual streams.

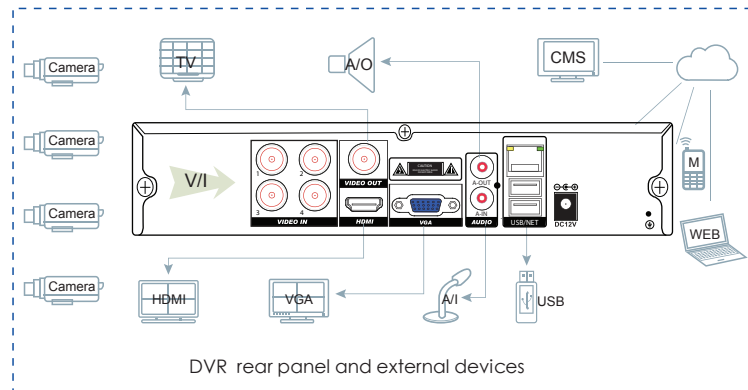
Test pass the full range of Western Digital,Seagate Sata HDD,recommend the use of AV-GP series Sata HDD.

The Rear Panel And External Devices

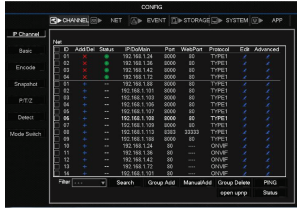


Note:Do not recommend access POE Port to Switch.

If Using 48V power supply ,please first connect the power adapter to the device,then connect the 220V power supply to the adapter.



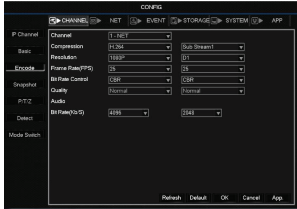
Video Management



Network Video Management

Click right to menu, choose [network passage management], search IPC around LAN, support ONVIF protocol, IPC protocol is compatible with many manufacturers. Camera access can add bulk IPC.

Click right to menu choose [Plug and Play], upnp to channel.

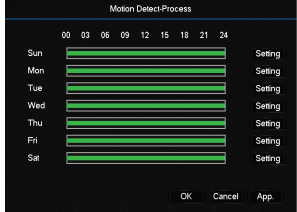


Analog Video Configuration

H.264 video compression, access analog camera, enter [passage configuration], adjustable image encoding parameters, achieve High-quality, low-stream image encoding.

Support access 960H, D1 HD analog video.

Video Configuration And Management

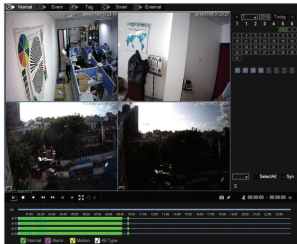


Record Configuration

Support 24 hours continuous recording, six periods editable recording and motion detection recording. Please set recording time according to the actual need.

Support pre-recording and redundancy.

Note: Only in automatic recording mode, dynamic detections and alarms can be recorded.



Palyback

Right click screen and select [Search].

Select the date and channels, and double click time bar to play videos.

Time bar visually shows if there is video for the date and the channels.

Support playback control bar and video backup.

Note: Green, red, yellow, time bar respectively denote ordinary recording, alarm recording and dynamic detection recording.

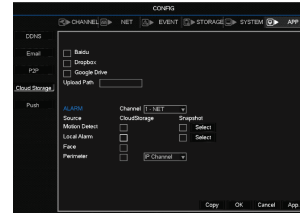
Network Configuration And Cloud Services



Network Configuration And Access

Built-in web server, configure IP, subnet mask, gateway, etc, connect to the Internet line, you can access the device.

Built-in P2P cloud services, input www.sgseye.com, input device ID and password, Internet access can be achieved.

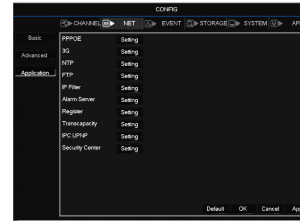


Cloud Storage Server

Support Baidu, DropBox, Google cloud disk, cloud storage server.

Enter [Cloud Storage], built-in Baidu, DropBox, Google cloud disk, set the alarm information push type, you can upload the alarm and pictures to the cloud disk.

In [Playback] interface, select video file backup to the cloud disk, cloud backup videos easily.

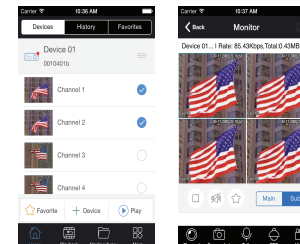


Network Applications

Enter [Network setting] advanced configuration interface, can configure PPPOE dial, 3G, NTP, FTP, ect.

Comprehensive network application services, network environment suitable for bits.

Mobile Client Access



Client Access:

Support mobile clients SgsEye, PC clients IMS300, through network service, enter device with ID and password, mobile scan two-dimensional code, you can access the device, anytime, anywhere viewing and monitoring.

Note: Support mobile clients SgsEye, PC clients IMS300, through network service, enter device with ID and password, mobile scan two-dimensional code, you can access the device, anytime, anywhere viewing and monitoring.