

WiFi Combustible Gas Alarm Instruction Manual



*In order to make you feel at ease, please read the manual carefully and keep it for future reference

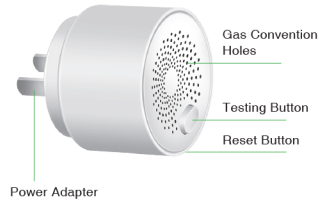
1

Product Description

This product is a WiFi flammable gas alarm, which is used to detect the leakage of flammable gas and prevent the harm caused by gas leakage. The alarm uses high stability semiconductor gas sensor, which has the characteristics of high stability and small sensitivity drift. When a flammable gas leak is detected and the concentration value set by the alarm is reached, the alarm will send an alarm signal. This product is used indoor where leakage may occur, such as kitchens.

2

Appearance Instruction



3

Specification

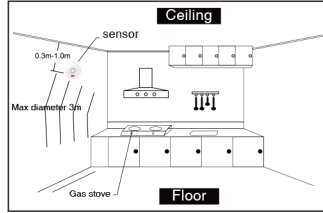
Working Voltage: AC 85V-250V
Average Consumption: $\leq 1.5W$
Alarm Sound: 70dB/m
Alarm Density: $6\%LEL \pm 3\%LEL$ (CH4)
WIFI Standard: 802.11b/g/n
Working Temperature: $-10^{\circ}C \sim +50^{\circ}C$
Working Humidity: $\leq 95\%RH$

4

Installation Diagram

Before installation, please confirm the detecting gas density heavier or lighter than air. If detecting gas is heavier than air: LPG, etc, install at 0.3-1m height from floor, semi-diameter to gas source less than 1.5m. If detecting gas is lighter than air: nature gas, manufactured gas, marsh gas, etc, install at 0.3-1m height from ceiling, semi-diameter to gas source less than 1.5m.

5



Android / iOS

2. Insert the gas detector into socket, starting network configuration automatically, Green LED flashes quickly.

7

How to use:

1. Download Tuya Smart APP, or scan the QR code below to download.

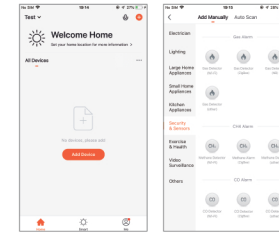
6

* If the network is not configured, only the green LED is on. After the network is successfully configured, the three-color LED blinks alternately. LED will be in Green before Warm up finish. It will take 5 minutes to warm up.



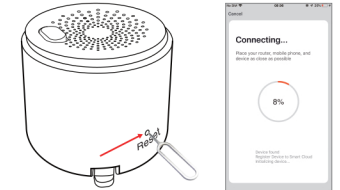
8

3. Use the mobile phone number to register the APP to log in, click "+" on the "My Home" screen or click "Add Device" in the middle blank, select security sensor, and click on the gas sensor (WiFi)



9

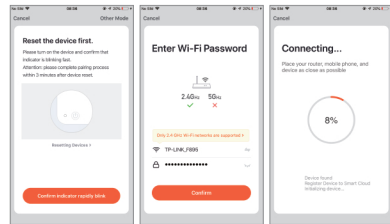
4. When Power on, the green indicator does not flash quickly, use the pin to press the RESET button for more than 5 seconds, the indicator flashes quickly, means starting network configuration automatically. Input "WIFI password" in the APP according to the prompt, and click ENTER.



10

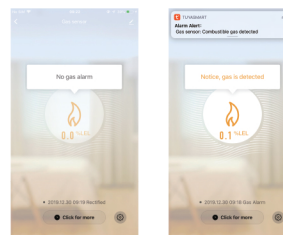
5. In the automatic network configuration mode, the indicator flashes quickly. Press the RESET button for 5 seconds with the PIN. The indicator flashes slowly and enters the manual network configuration mode. The APP selects the compatible mode. Enter "WIFI" according to the prompt and click ENTER to WIFI SETTING interface, connect to Smartlife_XXXX and return to APP to continue adding devices.

11



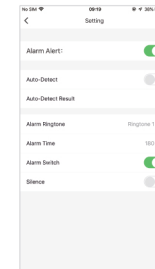
12

6. Network configuration successfully, click the gas icon to the interface. Use the gas to the Gas Convention Holes. There will be notification to Tuya Smart App, and the corresponding concentration value will be displayed at the same time.



13

7. In the interface of Gas Alarm, click SET, you can do gas-detecting, modify alarm sound, and alarm time, etc.



14

Indicator Status

Status	Color	Indicator	Alarm Sound
Power	Green	Normally ON	No
Alarm	Red	Flashing	Di-Di alarm. Many ring tones for option in the App
malfunction	Blue	Normally ON	Di-Di
WiFi network configuration successfully	Green	Normally ON	No
WiFi network configuration fail	Green	Flashing quickly/Flashing slowly	No

15

Product Testing

This product has a self-test button, and there is also a self-test button on the APP, which can be used to detect whether the alarm and the buzzer can work normally. When the self-test is pressed, the red LED of the alarm flashes. The buzzer beeps.

the alarm will automatically enter the continuous alarm state. At this moment, we should do the followings:

1. Close the pipeline valve immediately.
2. Extinguish all sources of ignition and avoid using everything that generates sparks.
3. Avoid switching various electrical appliances.
4. Immediately open the windows to convert the indoor air.

17

Alert Handling

When the concentration value of natural gas or liquefied petroleum gas with heavy ambient air reaches or exceeds the alarm concentration value,

16

Symptom Analysis and Troubleshooting

Symptom	Reasons	Troubleshooting
Warning up after Power On (LED keeps flashing)	1. Long time no power 2. Test the detector when warm-up	1. Power on detector and aging test for 24 hours 2. Do not test when warm-up
Blue light keeps on, and buzzer keeps beeping	Detector fault	Contact dealer to repair
WiFi configuration fail	1. too far from the router? 2. Wrong operations	1. 10M from the router 2. Do as the manual and App tips

18

Tips

- ① It is normal to have a slight heat on the surface of the case during operation.
- ② It is recommended to remove the alarm during the decoration.
- ③ Avoid spraying aerosol on the gas alarm.
- ④ If the alarm is used for a long time, the gas convention holes will have some oil stains, which will affect the sensitivity of the gas sensor. Do not let the detergent enter the body. Retest the product after cleaning.

19

⑤ The service life of the semiconductor sensor used in the alarm is 5 years. When it exceeds the service life, please replace it in time.

⑥ It is forbidden to use a lighter to test the alarm gas convention holes to avoid damaging the internal sensor of the alarm.

⑦ For your safety, besides using this product correctly, you should also be alert in your daily life and strengthen your awareness of safety and prevention.

20