

---

## **Fast installation of Panoramic Camera Software**

**Version: 4.1.4**

# Contents

1. Getting Started.....	- 4 -
1.1 Connect the device .....	- 4 -
1.2 Linkage.....	- 4 -
1.3 Software Installation.....	- 5 -
1.4 How to add device .....	- 5 -
1.5 How to add camera remotely.....	- 7 -
1.6 Preview .....	- 7 -
1.7 Unwrap .....	- 8 -
1.8 Snapshot and record .....	- 9 -
1.9 Playback .....	- 9 -
2. Panoramic Camera Software Features.....	- 10 -
2.1 Menu toolbar .....	- 11 -
2.2 Preview operation toolbar.....	- 11 -
2.3 Device List, PTZ control, Parameters .....	- 11 -
2.3.1 Device List.....	- 12 -
2.3.2 PTZ Control.....	- 13 -
2.3.3 Parameters .....	- 13 -
2.4 Preview Window .....	- 14 -
2.5 General Setting column .....	- 14 -
3. Device management .....	- 15 -
3.1 Add zone.....	- 15 -
3.2 Add device.....	- 15 -
3.3 Modify IP address .....	- 17 -
3.4 Modify device and zone .....	- 18 -
3.5 Delete device .....	- 19 -
3.6 Remote Configuration .....	- 20 -
4. Record and snapshot.....	- 20 -
4.1 Manual recording and snapshotting.....	- 20 -
4.2 Auto-recording .....	- 21 -
5. Linkage system.....	- 22 -

5.1 Establish a linkage system.....	- 22 -
5.2 Start a linkage .....	- 23 -
5.3 Initialize the linkage .....	- 23 -
5.4 Linkage operation.....	- 23 -

# 1. Getting Started

## 1.1 Connect the device

- Refer to the product manual, attach the device to a power line and a network cable, and then switch on the power. (Image 1)
- Refer to the label on the device interface or to the specification in the product manual when connecting.

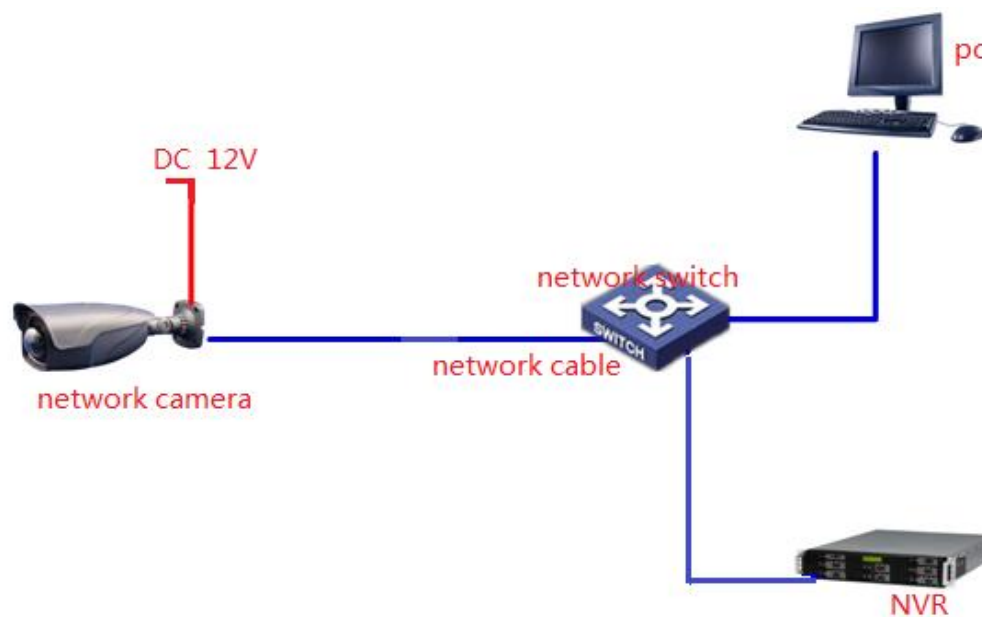


Image1

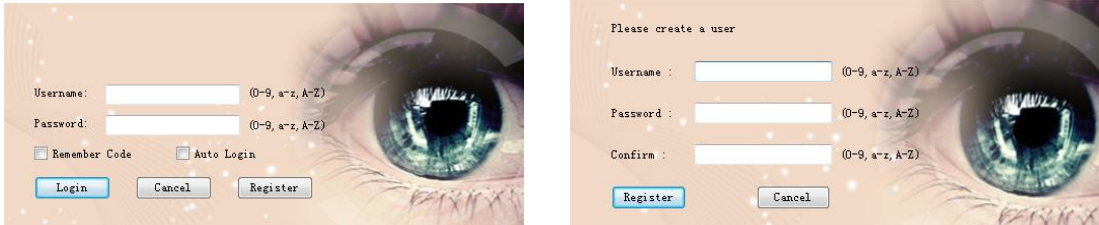
## 1.2 Linkage

- Refer to the product manual of the dome camera to connect it to a power line and a network cable.
- Refer to the product manual of the panoramic manual to connect it to a power line and a network cable.
- Refer to the label on the device interface or to the specification in the product manual when connecting. Switch on the power after connection is completed.

### 1.3 Software Installation

Click “Panoramic Camera Software.exe”, choose language and install according to the instruction.

Run the software after installation, register if it’s initial operation and login with the username and password registered.



### 1.4 How to add device

- Click the **Add Device** icon on the left side of the interface of Panoramic Camera Software;
- Click the “search device” in the window;
- The left column on the screen shows whether the device is successfully added or not. If it is a red question mark, this indicates that this device has not been added (Image 2). If it is green, that indicates a completed addition.

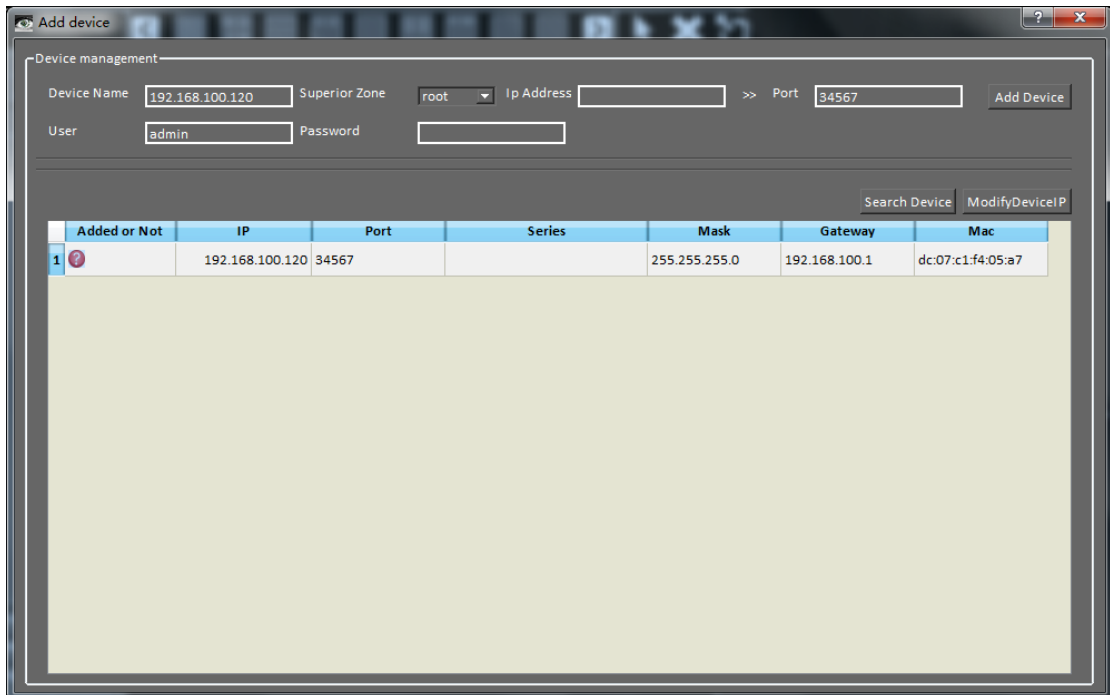
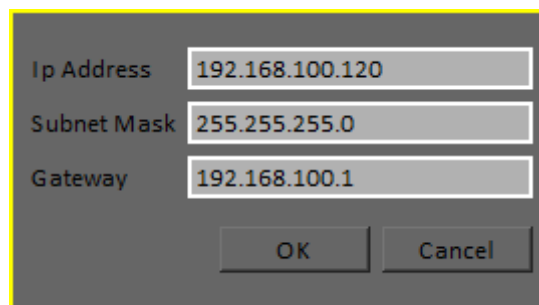


Image2

- Selected the online device that has not been added to re-add, the information of

this device will appear automatically on top of the bar.

1. If the IP address of the device and that of the computer are on the same network segment, enter a custom name and a password (default 123456) to add.
2. If the IP address of the device and that of the computer are not on the same network segment, the device cannot be added. In this case, set the IP address to the same as the computer's to add.
3. Select the device that should be modified, click "modify device IP", set the IP address to the same as the computer's, click confirm. This method is only applicable for our devices. (Image 3)



A dialog box with a dark background and a yellow border. It contains three input fields: "Ip Address" with the value "192.168.100.120", "Subnet Mask" with the value "255.255.255.0", and "Gateway" with the value "192.168.100.1". Below the fields are two buttons: "OK" and "Cancel".

Image 3

4. After the IP address has been modified, click "search device" to refresh. Refer to Step 1 to add device.
5. After clicking "add device", a message will pop up automatically on the screen. Once completed, the device will appear in the list on the left side of the interface. If failed, message blow will appear.(Image 4)

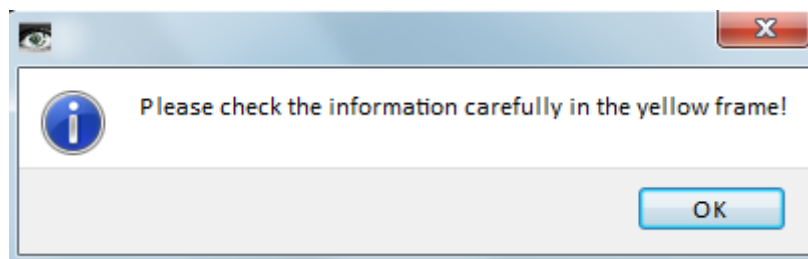
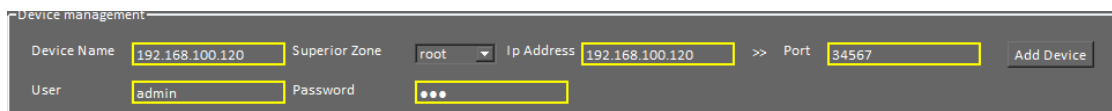


Image4

6. If the device is not successfully added, check the information in the yellow frame.(Image 5)



A screenshot of the "Device management" interface. It shows several input fields with yellow highlights: "Device Name" (192.168.100.120), "Superior Zone" (root), "Ip Address" (192.168.100.120), "Port" (34567), "User" (admin), and "Password" (masked with dots). There is an "Add Device" button on the right.

## Image 5

Note:

Is the device's name duplicated?

Are the IP address of the device and that of the computer on the same network segment? Are the gateways the same?

Is the port correct?

Is the password correct?

### 1.5 How to add camera remotely

Click **Add Device** on the left side of main interface and then click

**Public**

to add remote device;

Added or Not	IP	Port	Series	Mask	Gateway	Mac
1 ✓	192.168.0.46	34567		255.255.255.0	192.168.0.1	dc:07:c1:f5:14:4a

Enter UUID, username and password, then click **【Add Device】**;

If add failed, please confirm below:

Check again UUID in the system information of the camera ;

Check if the device connected online;

Confirm the password.

### 1.6 Preview

- After adding the device, click “live” on the upper left corner to return to the main screen.
- Select in the list on the left side the channel of the device that you want to preview, double-click to open. (Image 7)
- Select the format of the stream: Main Stream or Sub-stream. When the mouse moves and stops on one of the channels, it will show the information of the

stream of that channel.

- Double-click the window to watch in full screen, click ESC to exit full screen mode.



Image 7

## 1.7 Unwrap

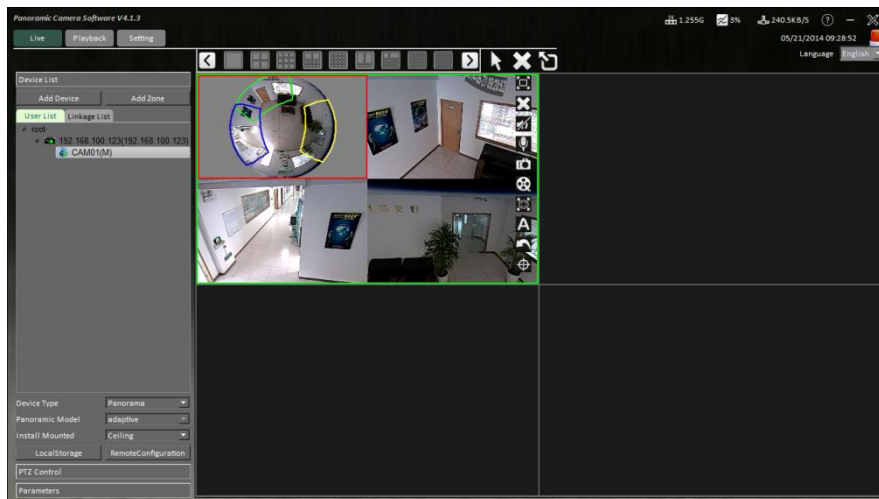


Image2

- Start previewing, select the screen and set the properties of the device at the bottom of the list, only panoramic camera need to be unwrapped.

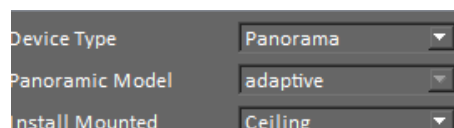



Image3

- Set the device type to “Panorama”, the panoramic model will be obtained automatically, confirm the way of mounting of the camera: ceiling, wall or floor.



Different mounting has different unwrapping, so select the way of installation correctly. Otherwise the effect of unwrapping cannot be achieved. Save the settings when done.




- Click the  icon on the left side of the previewing window and select the unwrapping mode.(Image 9)
- DPTZ manipulation is supported when the screen is unwrapped. You can drag, rotate and zoom by using the mouse.

Note: a few modes do not support DPTZ operation. The screen cannot be rotated or zoomed.

## 1.8 Snapshot and record



Image4

- After the preview is started, click the  icon on the right side in the window to snapshot. Each time a photo is captured, a message will automatically pop up and show the store path.
- After the preview is started, click the  icon on the right side in the window to record. Click the  icon to stop recording. When recording has begun, a red dot will flash on the upper left corner of the preview window, representing the recording has begun. When the recording stops, a message will automatically pop up to show the store path.

## 1.9 Playback

- Switch to the preview window, replay the video through the second line of the drop-down menu. The video can be played locally and remotely.

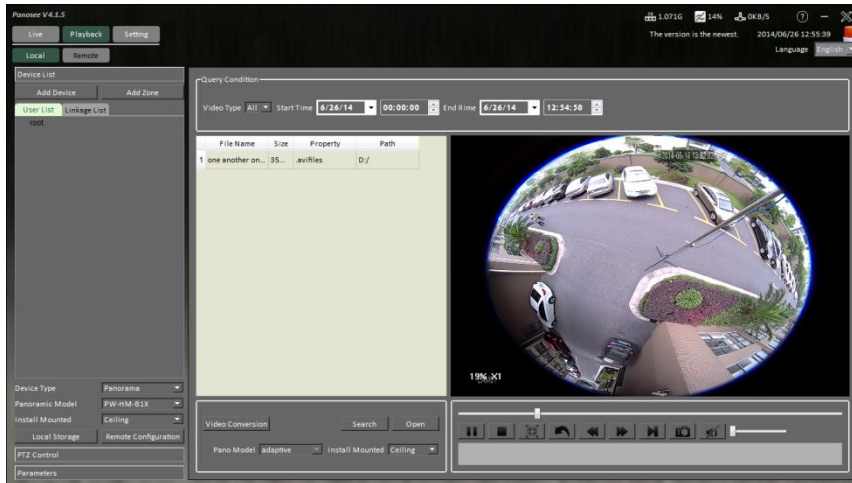


Image5

1. Local file refers to files stored on your computer. Local file replay means replaying stored files or unwrap them.
2. Click “open”. The browser window will pop up automatically. Select the store path. Choose the video file to open. It replays automatically when opened. Displayed videos will be shown in the file list, double-click to play again.
3. On the right side of the video displays the information about the local file: size, location and so on.
4. To replay panoramic video, first select the right mounting mode and then select the appropriate unwrapping mode.
5. Remote file replay refers to the video files stored in the memory card of the camera.

## 2. Panoramic Camera Software Features

Image 12 shows the software’s original interface.

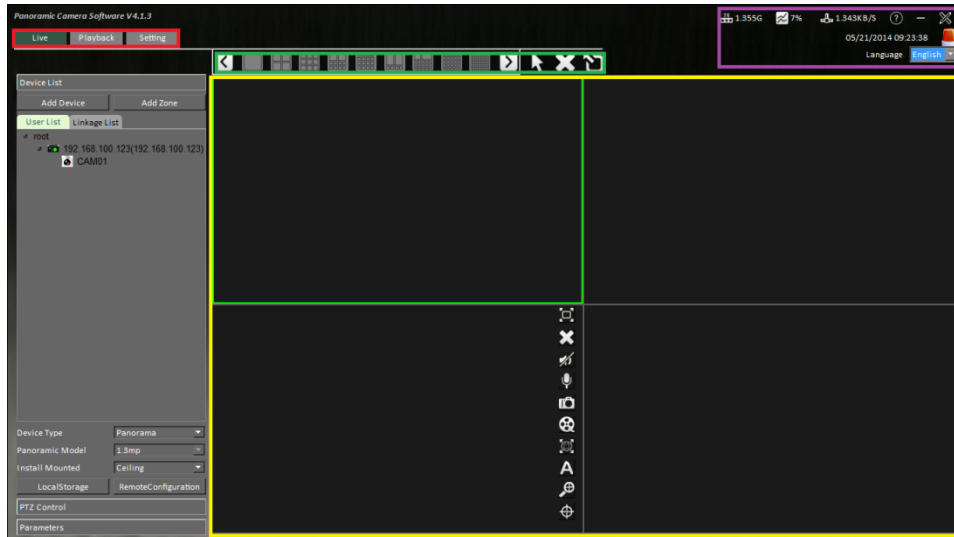
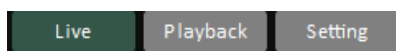


Image12

## 2.1 Menu toolbar

As showed in the image above, the red area is the menu toolbar.



Click on “Live”, “Playback” and “Setting” to switch mode.

## 2.2 Preview operation toolbar

As showed in the image above, the green area is the preview operation toolbar.



Operate the preview window through the toolbar above.

## 2.3 Device List, PTZ control, Parameters

As showed in the image above, the blue area included device list, PTZ control and parameters. Click to switch.

## 2.3.1 Device List

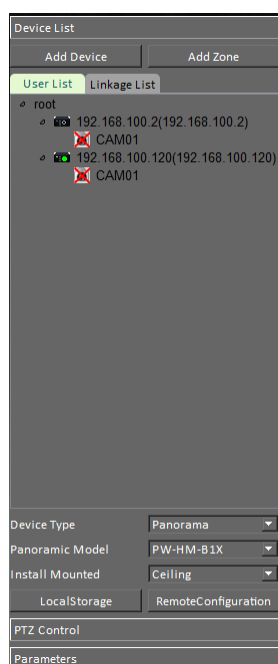


Image6

1. Click add device icon or add zone icon to add device or add zone.
2. Added devices or zones will be showed in the middle.



If the green light is on, the device is online, if the green light is off, the device is offline.



Previewing.



The device is online, the preview stops.



The device is not collected.

2. Set the properties of the device. The properties below are the conditions to operate panoramic camera:

**Device Type:** Panoramic camera and dome camera, the default is panoramic camera.

Select the right device type to open it correctly.

**Panoramic Model:** Select the right model according to the device purchased. If the device has been added into the database, the software will capture its model automatically.

**Install Mounted:** Select the corresponding installation. Different installation mode has different panoramic unwrapping mode. If the installation chosen is

not the same as the actual installation, the effects will not be applicable.

4. Click local storage icon and remote configuration icon to set local storage and remote configuration. Details are presented in later chapters.

### 2.3.2 PTZ Control

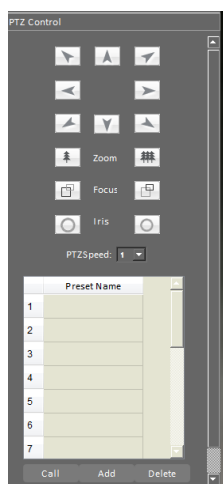


Image7

PTZ control bar includes PTZ control and preset settings. PTZ control is only applicable to dome camera, not to panoramic camera.

### 2.3.3 Parameters

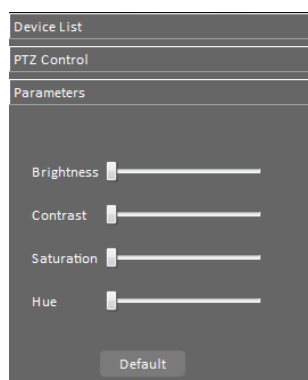


Image8

Parameters modify the settings of the previewing video, including brightness, contrast, saturation and hue. Drag sliders to set. Click default to return to the original settings.











## 2.4 Preview Window

As showed in image 12, the yellow area is the preview window. Select the number of the window to support more preview windows.



Image9

Select the preview window, the toolbar emerges on the right side automatically. Stop the mouse on a icon, the feature of the icon will show automatically. From top to the bottom:

-  Full screen;
-  Close the preview window;
-  Sound on or off;
-  Intercom;
-  Snap shot;
-  Record;
-  Unwrap;
-  Stream;
-  Original Size;
-  Linkage.

## 2.5 General Setting column

The purple area in Image 12 is the general setting column.

On the upper right corner are the help, minimize and close buttons.

Line 2: date and alarm.

Line 3: switch language from Chinese to English.

### 3. Device management

#### 3.1 Add zone

Click the **Add Zone** icon on the left side to add new zone. Different cameras can be added to different zones to manage more cameras according to different zones. Newly added zone will be placed directly under the root and add next secondary area to the next level. Pay attention to the levels of zones added.

After clicking, a window will pop up, enter zone name and choose superior zone. Click confirm to complete addition.

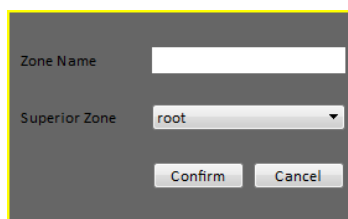


Image10

#### 3.2 Add device

Click **Add Device** icon on the left side, a window will automatically pop up.

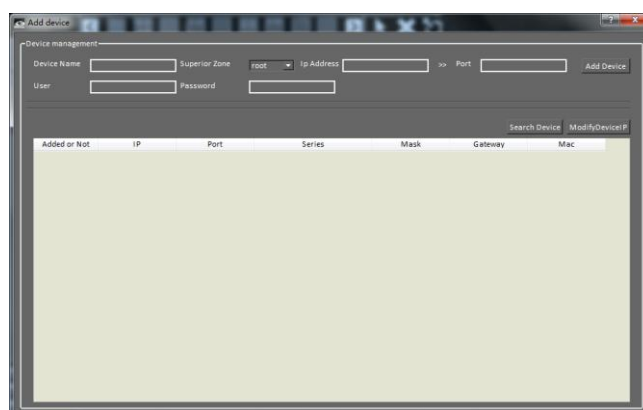


Image11

**Attention:** Before adding a device, make sure that the device has been well installed and connected online;

Analog camera is connected to DVR related equipment, verify IP address of DVR;

Network camera is already connected to the same network of the control computer, confirm the IP address of the network camera and verify whether the IP address is in conflict with the existing equipment. If it is in conflict, use software (next chapter) to modify IP address or modify the IP address via IE login(refer to the product manual of network camera)

Click “search device” to search online device, devices found will be listed in the chart below automatically.

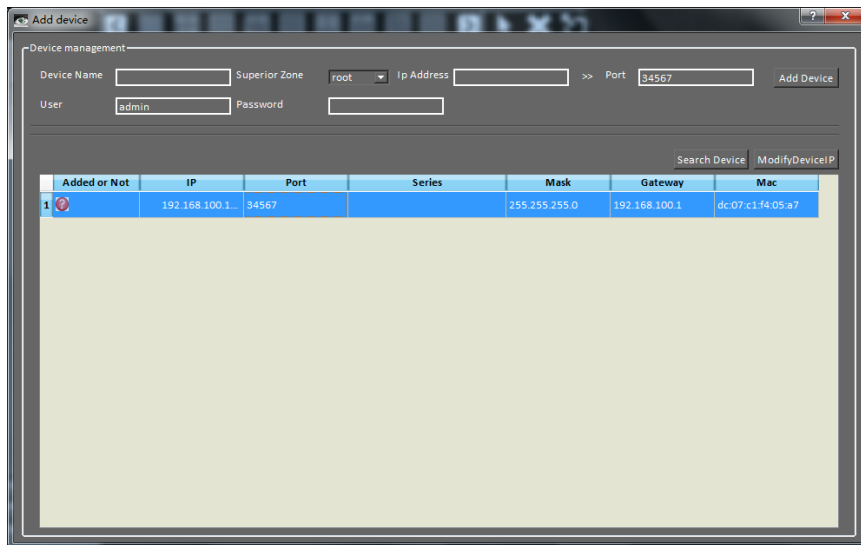


Image12

The left column shows whether the device is well added. If it is a red question mark, this indicates that this device has not been added (Image above). If it is green, that indicates a completed addition.

Selected the online device that has not been added to re-add, the information of this device will be placed automatically on top of the bar.

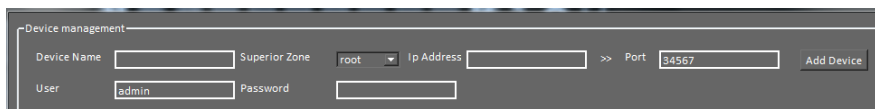


Image13

**Device Name:** Name the device to user’s preference.

**Superior Zone:** Select the zone of the newly add device.

**Set IP Address:** Enter the IP address according to the new device.

**Port:** Enter the port number according to the new device. There are two port numbers:

8091 and 34567. Please refer to the camera manual (it will be



automatically entered when an online device is added, users can also find the port number in the device list.)

**User:** Default is admin.

**Password:** Default is 123456.

When adding online devices, the software will automatically enter all the information except the password, user can modify the name and superior zone, enter password and then click add. The software now does not support addition of offline devices.

Click add, a message will pop up. After a successful addition, the device will appear in the list on the left side. If it is not added successfully, the message below will appear.

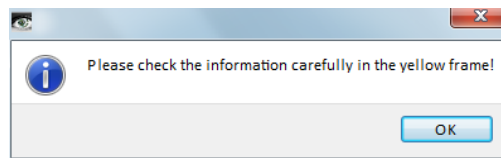


Image14

If the device is not added successfully, check the information in yellow frame:

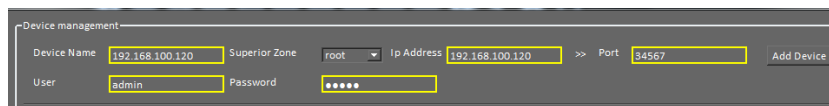


Image15

Note:

Is the device's name duplicated?

Are the IP address of the device and that of the computer on the same network segment? Are the gateways the same?

Is the port correct?

Is the password correct?

### 3.3 Modify IP address

If the IP address and that of the computer are not on the same network segment, the device cannot be added directly. In this case, set the IP address of the camera to the same as that of the computer, and add again.

Select the device that should be modified, click "change IP", set the IP address of

the device to the same as the computer's, click "Ok".

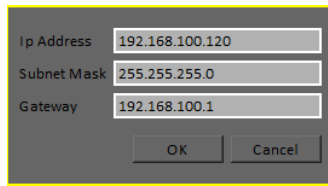


Image16

After changing the IP, wait ten seconds, click search to refresh and then add device.

### 3.4 Modify device and zone

#### Modify device

After an addition of a device, only the name and the zone of the device can be changed, other information cannot be modified. Select the device that should be modified in the list on the left side, click it, a menu below will appear.

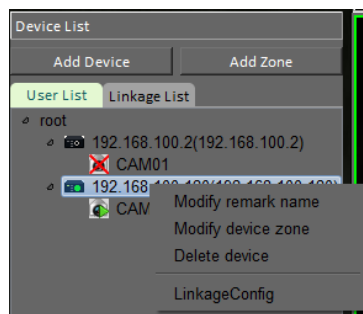


Image17

Click "change remark name", the window below will pop up, enter the new name and click confirm.

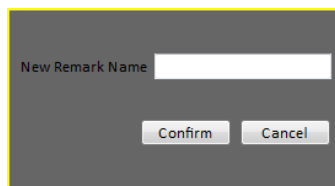


Image18

Click the zone that the device, the window below will pop up, choose a new zone and click confirm.

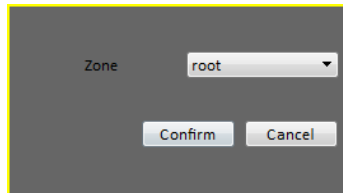


Image19

### Modify zone

Select the zone that should be modified in the list on the left, right click. The menu in Image 27 will appear.

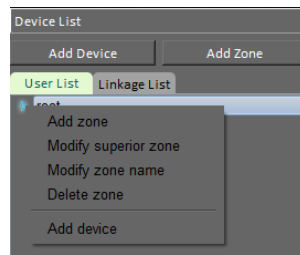


Image20

Click the zone that should be modified, the window in image 28 will appear, user can change the superior zone, click confirm.

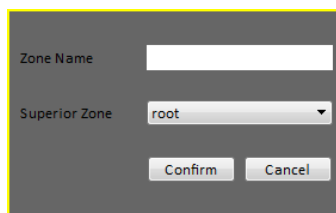


Image21

Click the name of the zone that should be modified, the window in Image 29 will appear, enter a new name, click confirm.

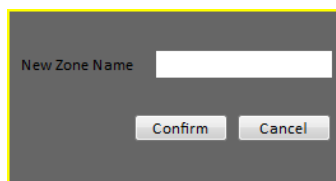


Image22

### 3.5 Delete device

Select the device that should be deleted in the list on the left, right-click, a menu in Image 30 will appear, click “delete device”. After the click, a message will pop up to inform the user whether the device is successfully deleted.

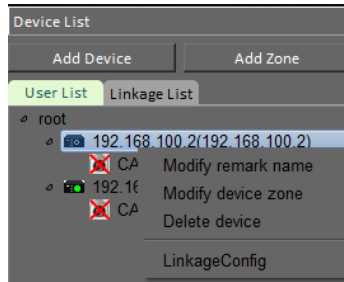


Image30

Choose the zone that should be deleted in the list on the left, right-click the zone. The menu in Image 31 will pop up, choose delete zone. After the click, a message will pop up to inform the user whether the device is successfully deleted.

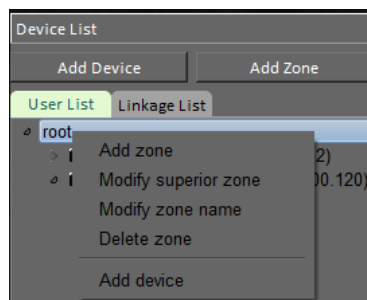


Image31

**Note:** When a zone is deleted, all the devices in that zone will be deleted as well.



### 3.6 Remote Configuration

Click the **RemoteConfiguration** icon in the lower left side of the menu to enter the remote configuration interface, all the parameters can be modified in the configuration menu.

## 4. Record and snapshot

Manual recording and snapshot can be achieved by the software, automatic recording can also be achieved by NVR on computer.

### 4.1 Manual recording and snapshot

When the preview begins, click the  icon on the right side, click  icon to record and snapshot manually. The video file and photos captured will be saved under C:\PW\Record\ and C:\PW\Pic\, user can choose other store paths. (Image 32)

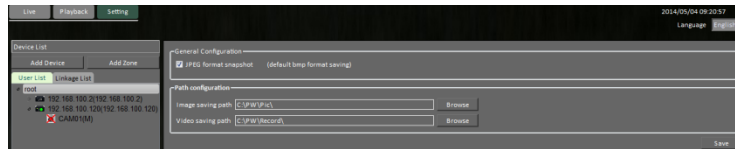


Image32

## 4.2 Auto-recording

Click the **LocalStorage** icon in the left corner at the bottom to begin auto-recording. With a simple configuration, the client can start recording. PC NVR function can be realized. Auto- recording can be achieved when the device is online and the software is running.

### Basic record tactics

(Image 33)

**Save Path:** User can decide the save path, default is D:\Program Files\Panoramic Camera Software

File delete tactics: full disk, file expired, or both. Default is full disk.

**PreRecord:** Time of the Pre-recording, default is 0 second.

**DelayRecord:** Delay the recording, default is 0 second.

**File Len:** The length of a file, default is 30 minutes.

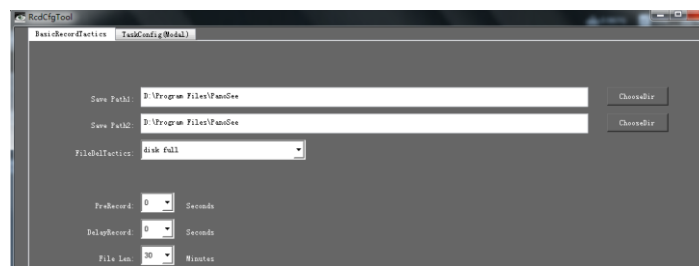


Image33

### Task Configuration

(Image 34)

**Custom Task:** Set the recording time according to the client's need.

**Full Day template:** Take the recording for a whole day.

**Work Day Template:** Take the recording for work days.



Image33

## 5. Linkage system

The linkage system combines panoramic camera and high-speed dome camera to form a fast rotating surveillance device which can improve monitoring efficiency and expand the monitoring scope. Except the panoramic camera and the dome camera are linked by hardware, other features of the system can be achieved by using software.

### 5.1 Establish a linkage system

#### Set the device type

Open the preview of panoramic camera and dome camera, make sure that the device type has been correctly set. (Image 29) Select the added dome camera, choose “Dome Camera” in the Device type. A message will pop up when the device type is reset.

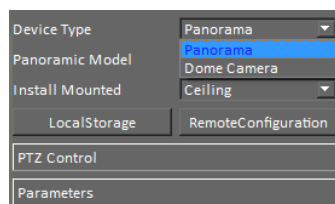



Image23

#### Establish linkage system

Find the icon  on the right side of preview window and click it to start. User needs to set up the linkage system in initial operation. As the image shown below, enter the height of panoramic camera (after installation) and choose control model RS485 or Net according to different PTZ cameras. The last step is to choose the correct PTZ camera to set up the linkage

system.

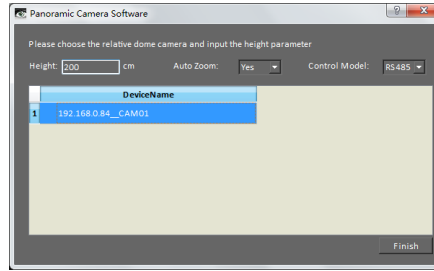


Image24

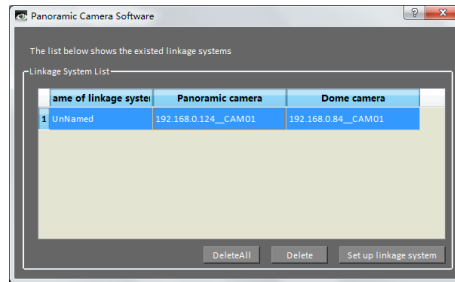



Image25

## 5.2 Start a linkage

Click the  icon in the panoramic preview to start a linkage. Double-click on an object in the preview window, the dome camera will focus on the object, but it is not accurate. Only after an initialization of the linkage system, the operation will be accurate.

## 5.3 Initialize the linkage

Double-click an object in the panoramic preview. After the dome camera automatically focus on the object, find the place indicated by the cross in the panoramic preview, right-click to add a reference point. Repeat three times. When references points are set, they will be saved in panoramic camera, thus there is no need to set twice.

Choose objects that can be easily recognized in the panoramic preview to add reference points. If the image in the dome camera preview is not easy to be found in the panoramic preview, double-click other places in the panoramic preview to find other recognizable objects.

## 5.4 Linkage operation

When the linkage has been initialized, double-click the panoramic preview to

start linkage.

Recording and snapshot in a linkage system remain separated. Refer to 4.1.

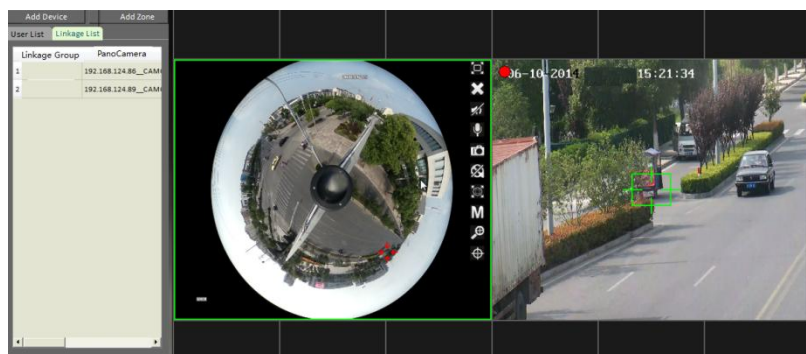


Image26